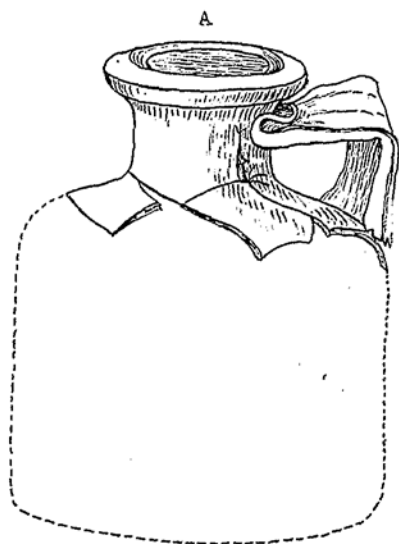




<http://kentarchaeology.org.uk/research/archaeologia-cantiana/>

Kent Archaeological Society is a registered charity number 223382

© 2017 Kent Archaeological Society



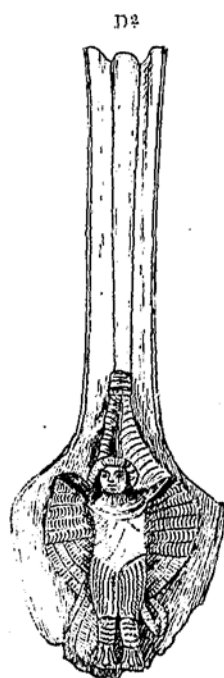
$\frac{1}{4}^{\text{TH}}$  OF ACTUAL SIZE.



$\frac{1}{3}^{\text{RD}}$  OF ACTUAL SIZE.



$\frac{1}{3}^{\text{RD}}$  OF ACTUAL SIZE.



$\frac{1}{2}$  SIZE.

ROMAN VESSELS FOUND AT SITTINGBOURNE.

## ROMAN INTERMENT DISCOVERED AT SITTINGBOURNE.

MY DEAR SIR,—I have very great pleasure in sending you an account of the discovery, on the 7th of March, of a Roman Interment at Bayford, in Sittingbourne. I enclose drawings of the principal objects found. The field, where these interesting remains were interred, lies about a hundred yards to the east of Bayford orchard, the footpath, through the brickfields to Murston, being but a few yards from the site of the present discovery. The following is a descriptive list of the articles :—

- A.—A green glass vessel containing calcined bones. Height,  $9\frac{1}{2}$ in.; diameter of body,  $7\frac{3}{8}$ in.; diam. of neck,  $2\frac{1}{2}$ in.
- \*—Two necks and fragments of small vases of white glass.
- B.—A goblet of copper. Height,  $6\frac{1}{2}$ in.; diam. at its widest part,  $5\frac{3}{4}$ in.; diam. of neck,  $\frac{3}{4}$ in.
- C.—Bronze Lamp. Height,  $1\frac{1}{2}$ in.; diam. of larger circle,  $3\frac{5}{16}$ in.; crescent-shaped handle 3in. wide; weight, 1lb.  $2\frac{3}{4}$ oz.
- D.—A Copper Jug, its mouth being in the form of a compound radiate leaf, with a handle (D 2) bearing the figure of a siren, in relief, upon its termination. Height, 6in.; diam. of body,  $4\frac{3}{4}$ in.; weight, 2lb.  $1\frac{1}{2}$ oz.
- E.—A Glass Jug (pale green) ornamented with a raised ribbed pattern. Height,  $8\frac{1}{8}$ in.; diam. widest part, 6in.; diam. neck,  $1\frac{1}{2}$ in.; diam. base,  $2\frac{3}{16}$ in.
- A Copper Bowl with handle (G) terminating with the head of a deity, bearded and represented with horns. Diam. of bowl from rim to rim, measuring from outer edge,  $9\frac{1}{4}$ in.; length of handle, 5in.; weight of whole, 3lbs.

H.—A lecythus, of copper, ornamented with four medallions in

\* relief, representing heads of an African type. Height, 2in.; diam. of mouth, 1½in.; weight, 6oz.

\*—Fragments of an iron Strigil. These were found attached to the lecythus by corrosion, and as the latter has a hole in its rim, for suspension, it is probable that they were fastened together by a ring, when placed in the grave.

Fragments of animal bones.

Six pateræ of Samian ware.

Three cups of Samian ware.

\*—Two minute urn-shaped vessels of a brownish coloured pottery.

In the British Museum, where I lately saw a set of bathing requisites, consisting of strigils and a lecythus, two glass phials and two small vessels of pottery, arranged together as found, it became at once apparent to me that I had discovered a similar set. The articles which form the set are marked with asterisks in the above list. It is needless for me to say how gratified I am to be enabled to lay before the Kent Archæological Society such admirable examples of Roman art, owing to my good fortune in being summoned to the spot within five minutes after the discovery of the first relic.

Believe me,

Yours sincerely,

GEORGE PAYNE, JUNIOR.

*Sittingbourne, March 28th, 1877.*

Canon Scott Robertson,

*Hon Sec., K. A. S.*

C



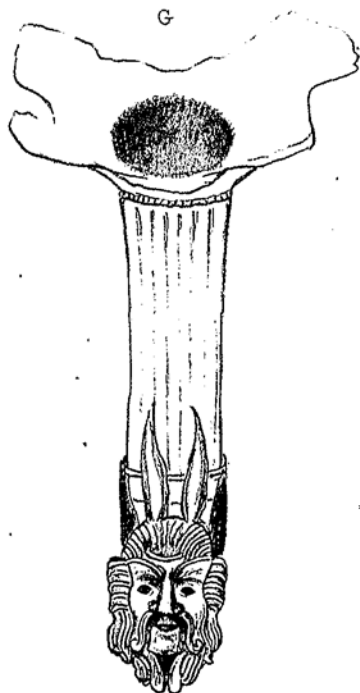
$\frac{1}{4}$  TH OF ACTUAL SIZE.

H



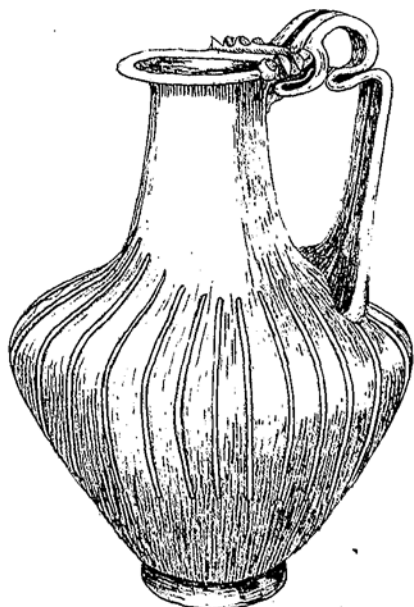
ACTUAL SIZE.

G



$\frac{1}{2}$  SIZE.

E



$\frac{1}{3}$  RD OF ACTUAL SIZE.

ROMAN VESSELS FOUND AT SITTINGBOURNE.